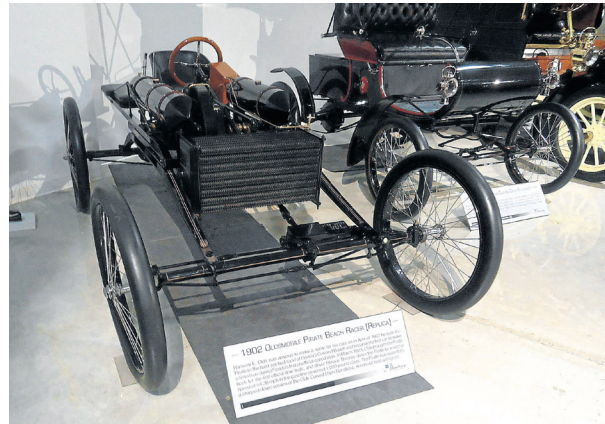


## Museu da GM

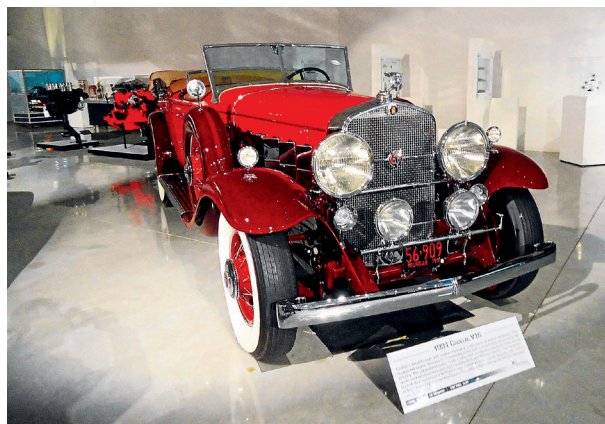
Louis Chevrolet ajudou a fundar a Chevrolet em 1911



FOTOS DANIEL DIAS



**OLDSMOBILE PIRATE BEACH RACER 1902**



**CADILLAC V16 1931**



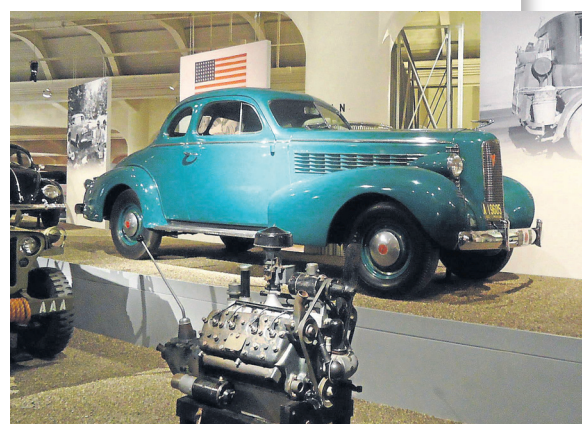
**CHEVROLET BEL AIR 1957**

## Museu da Ford

Henry Ford abriu sua companhia e revolucionou com a linha de produção



**LINCOLN CONTINENTAL 1961 DE KENNEDY**



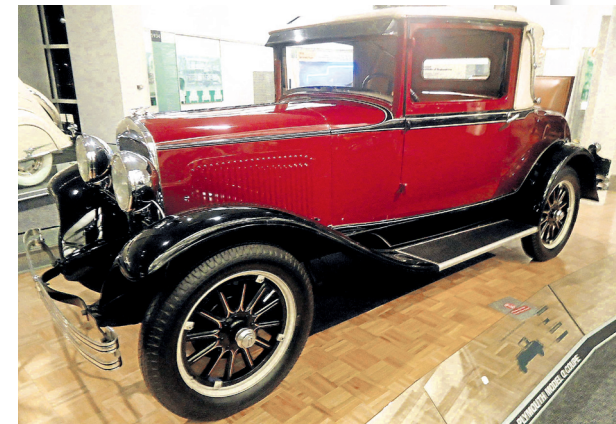
**LASALLE OPERA COUPE 1938**



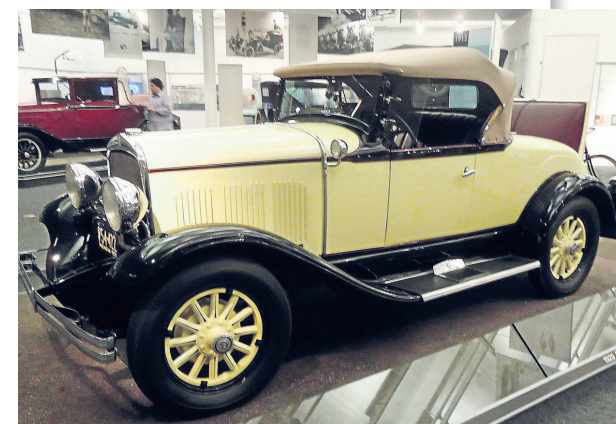
**MERCURY 1950**

## Museu da Chrysler

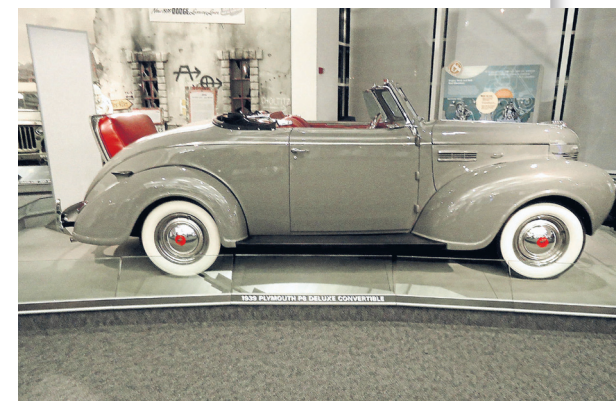
O fundador Walter P. Chrysler tem sua foto em destaque no hall do prédio



**PLYMOUTH MODEL Q CUPÊ 1928**



**DESOTO SIX ROADSTER 1929**



**PLYMOUTH P8 DE LUXE CONVERSÍVEL 1939**